



UNDERGROUND SYSTEMS

Drain...

Pipes



Bends



Inspection



Shallow Access



**Adoptable
Inspection
Chamber System**



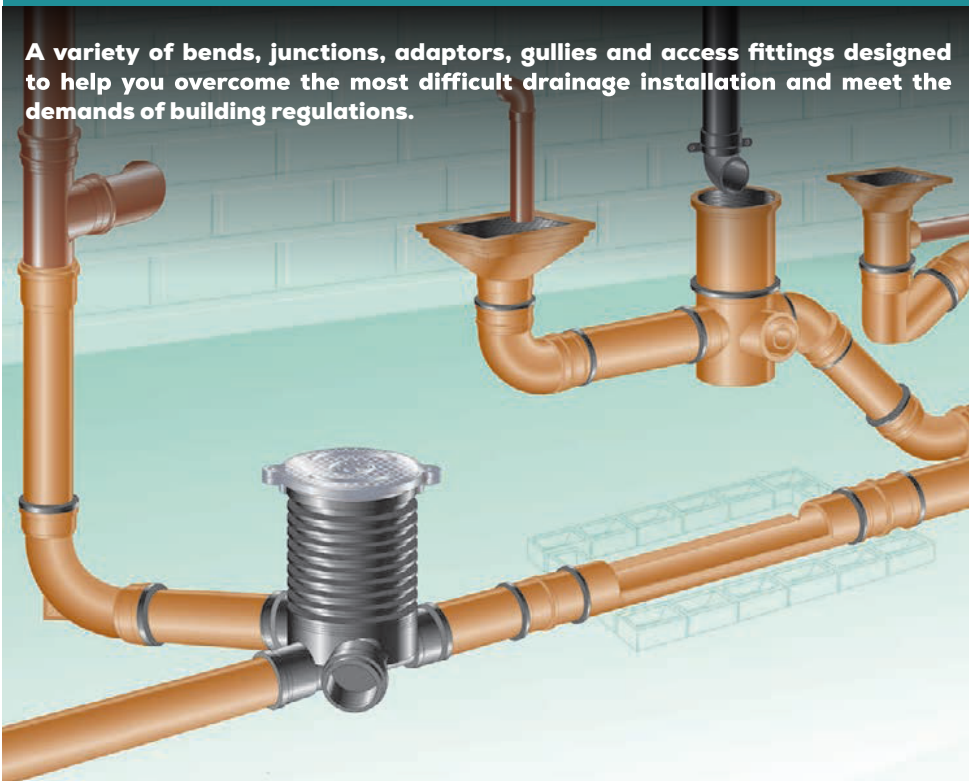
Deep Inspection



110mm/160mm/200mm DRAINAGE SYSTEMS

PIPES

A variety of bends, junctions, adaptors, gullies and access fittings designed to help you overcome the most difficult drainage installation and meet the demands of building regulations.



For illustrative purposes only

PIPE



	Code	Pack
110mm (3m)	DS505	1
110mm (6m)	DS544	1
160mm (3m)	DS534	1
160mm (6m)	DS545	1
200mm (6m)	DS744	1

Frame Qty: 110mm – 100 | 160mm – 46.

SOCKETED PIPE



	Code	Pack
110mm (3m)	DS508	1
110mm (6m)	DS549	1
160mm (3m)	DS548	1
160mm (6m)	DS550	1

Frame Qty: 110mm – 100 | 160mm – 46.

SOCKETED LAND DRAINAGE PIPE



	Code	Pack
110mm (6m)	DS546	1
160mm (6m)	DS547	1

Frame Qty: 110mm – 100 | 160mm – 46.

110mm/160mm/200mm DRAINAGE SYSTEMS

SOCKETS & BENDS

SINGLE SOCKET



	Code	Pack
110mm	DS208	1
160mm	DS406	1
200mm	DS729	1

DOUBLE SOCKET



	Code	Pack
110mm	DS211	1
160mm	DS409	1
200mm	DS730	1

SLIP COUPLING



	Code	Pack
110mm	DS212	1
160mm	DS410	1

No internal stop.

10° BEND

Spigot tail



	Code	Pack
110mm	DS697	1

10° BEND

Double socket



	Code	Pack
110mm	DS673	1

15° BEND

Spigot tail



	Code	Pack
160mm	DS408	1
200mm	DS728	1

20° BEND

Spigot tail



	Code	Pack
110mm	DS696	1

20° BEND

Double socket



	Code	Pack
110mm	DS674	1

30° BEND

Spigot tail



	Code	Pack
110mm	DS318	1
160mm	DS418	1
200mm	DS733	1

Images for 200mm sizes may vary from those shown

BENDS

110mm/160mm/200mm DRAINAGE SYSTEMS

110mm

160mm

200mm

30° BEND

Double socket



Code Pack

110mm	DS675	1
-------	-------	---

45° BEND

Spigot tail



Code Pack

110mm	DS331	1
160mm	DS404	1

45° BEND

Double socket



Code Pack

110mm	DS676	1
160mm	DS432	1
200mm*	DS732	1

*Single socketed

87½° 200mm LONG RADIUS BEND



Code Pack

110mm	DS554	1
-------	-------	---

87½° 456mm LONG RADIUS BEND



Code Pack

110mm	DS555	1
-------	-------	---

87½° 686mm LONG RADIUS BEND



Code Pack

160mm	DS556	1
-------	-------	---

87½° BEND

Spigot tail



Code Pack

110mm	DS322	1
160mm	DS403	1
200mm	DS731	1

87½° BEND

Double socket



Code Pack

110mm	DS671	1
160mm	DS431	1

ADJUSTABLE BEND

Spigot tail



Adjusts from 5° - 30°

Code Pack

110mm	DS329	1
-------	-------	---

45° 456mm LONG RADIUS BEND



Code Pack

110mm	DS557	1
-------	-------	---

MULTIFLEX BEND

Spigot tail



Adjusts from 0° - 90°

Code Pack

110mm	MFBSO	1
-------	-------	---

MULTIFLEX BEND

Double socket



Adjusts from 0° - 90°

Code Pack

110mm	MFBD0	1
-------	-------	---

87½° REST BEND

Double socket



Code Pack

110mm	DS663	1
-------	-------	---

45° 686mm LONG RADIUS BEND



Code Pack

160mm	DS558	1
-------	-------	---

PROTECT YOUR STACK!

Always make sure the lowest branch of your soil stack is the right distance away from the invert of your drain.



Height	Min. Vertical	Solution
Up to 3 storeys	450mm	1 x DS663
Up to 5 storeys	740mm	2 x DS676 & a piece of pipe

Pssst... Going even taller than 5 storeys?

Connect the ground floor into their own soil stack or make connections direct to drain. If you get to 20 storeys you'll need to do this for the first floor too!

GOOD TO KNOW

110mm/160mm/200mm
DRAINAGE SYSTEMS

JUNCTIONS

45° JUNCTION

Double socket



Code Pack

110mm	DS278	1
160mm	DS430	1
200mm	DS734	1

45° JUNCTION

Triple socket



Code Pack

110mm	DS678	1
160mm	DS428	1

45° UNEQUAL JUNCTION

Double socket



Code Pack

160mm x 110mm	DS471	1
200mm x 160mm	DS735	1

87½° JUNCTION

Double socket



Code Pack

110mm	DS269	1
160mm	DS427	1

87½° JUNCTION

Triple socket



Code Pack

110mm	DS672	1
-------	-------	---

**strong. durable.
RELIABLE**



MULTIFLEX BRANCH

Double socket



Adjusts from 90° - 45°

Code Pack

110mm	MFYDO	1
-------	-------	---

MULTIFLEX BRANCH

Triple socket



Adjusts from 90° - 45°

Code Pack

110mm	MFYTO	1
-------	-------	---

Images for 200mm sizes may vary from those shown

110mm/160mm
DRAINAGE SYSTEMS

ADAPTORS & CONNECTORS

EAZISLEEVE ADAPTOR

Flexible adaptor coupling



Complete with stainless steel clips.

Code Pack

110mm	DS026	1
Size range '121-136 / 100-115mm'		
160mm	DS027	1
Size range '170-192 / 144-160mm'		

110mm FLEXIBLE ADAPTOR

Flexible drainage coupling



Complete with stainless steel clips.
Can be used above ground.

Code Pack

110mm	DS028	1
Size range 100-115mm.		

DRAIN CONNECTOR

Finned tail - socket



Code Pack

110mm	GS121	1
	BS121	1

DRAIN CONNECTOR



PVC-u to thickwall clay pipe.

Code Pack

110mm	DS350	1
-------	-------	---

DRAIN CONNECTOR



PVC-u to thinwall clayware spigot.

Code Pack

110mm	DS351	1
-------	-------	---

DRAIN CONNECTOR



Inspection chamber to clay pipe.

Code Pack

110mm Thickwall	DS347	1
110mm Thinwall	DS348	1

DRAIN CONNECTOR



External use only

Code Pack

	DS024	50
Flexible for 50, 65 and 68mm.		

FLEXIBLE REDUCER



Fits into pipe and fittings.

Code Pack

110mm	DS025	50
Accepts 32 or 40mm.		

110mm/160mm/200mm
DRAINAGE SYSTEMS

ACCESS & NON RETURN

ACCESS PIPE

Spigot tail



Code Pack

110mm	DS309	1
200mm	DS739	1

87½° ACCESS BEND

Spigot tail



Code Pack

110mm	DS326	1
-------	-------	---

RODDING POINT

Socket tail



Code Pack

110mm	DS670	1
-------	-------	---

ACCESS CAP

Spigot tail



Code Pack

110mm	DS246	1
160mm	DS421	1

SOCKET PLUG



Code Pack

110mm	DS214	1
160mm	DS411	1
200mm	DS737	1

Also for on-site socket protection.

REDUCER (LEVEL INVERT)



For surface water only

Code Pack

110 x 82mm	DS633	1
160 x 110mm	DS433	1
200x160mm	DS738	1

NON RETURN VALVE

Spigot tail



Code Pack

110mm	DS342	1
160mm	DS442	1

For surface water only.

MAXI-FILTRA



Code Pack

8F-STU019-BLK	1
---------------	---

MAXI-FILTRA CARTRIDGE & ALUMINIUM COVER



Code Pack

8F-STU022-YLW	1
99093	1

110mm/160mm
DRAINAGE SYSTEMS

GULLIES

GULLY TRAP



Code Pack

110mm	DS001	1
-------	-------	---

Expansion sockets 90° P Trap.

MULTI GULLY TRAP



Code Pack

110mm	DS012	1
-------	-------	---

Use with standard Hunter bends to form P, S and Q Traps.

CIRCULAR TOP BOTTLE GULLY



Includes grid and rodding access.
Supplied with removable back inlet plug.

Code Pack

110mm	DS046	1
-------	-------	---

SQUARE TOP BOTTLE GULLY



Includes grid and rodding access.
Supplied with removable back inlet plug.

Code Pack

110mm	DS049	1
-------	-------	---

SQUARE GULLY TOP



200mm x 200mm.

Code Pack

	DS054	1
--	-------	---

For use with DS046.

CIRCULAR GRID GULLY TOP



180mm Ø

Code Pack

	DS055	1
--	-------	---

For use with DS046, DS049 and DS054.

RAISING PIECE



Code Pack

160mm	DS048	1
-------	-------	---

For use with DS046, DS049 and DS054.

SEALED GULLY ACCESS



150mm x 150mm

Code Pack

	DS047	1
--	-------	---

Also fits 110mm and 160mm pipes.

HOPPERS

110mm
DRAINAGE SYSTEMS

SQUARE HOPPER

Solvent socket tail



Code Pack

110mm DS003 1

SQUARE HOPPER

230mm spigot tail



Code Pack

110mm DS002 1

SQUARE HOPPER & GRATING

Spigot tail



With grating.

Code Pack

110mm DS004 1

BACK INLET HOPPER

Solvent socket tail



Code Pack

110mm DS007 1

BACK INLET HOPPER

230mm spigot tail



Code Pack

110mm DS006 1

BACK INLET HOPPER & GRATING

Spigot tail



With grating and back inlet plate.

Code Pack

110mm DS008 1

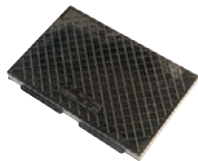
GRATING



Code Pack

150x150mm DS020 10

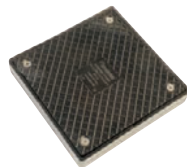
BACK INLET PLATE



Code Pack

150x100mm DS011 10

SEALED COVER PLATE



Code Pack

150x150mm DS022 10

CHANNEL PIPE & FITTINGS

110mm/160mm
DRAINAGE SYSTEMS

LH 45° CHANNEL BEND



Code Pack

110mm DS561 1

RH 45° CHANNEL BEND



Code Pack

110mm DS563 1

GOOD TIP

Adding channel bends into a manhole?
Always face towards the water flow when determining whether right or left hand bends are required.

CHANNEL PIPE



Code Pack

110mm DS559 1

160mm DS560 1

Flanges supplied loose.

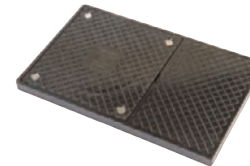
87½° 455mm LONG RADIUS BEND



Code Pack

110mm DS566 1

SEALED BACK INLET PLATE



Code Pack

150x250mm DS010 10

DRAIN LEAF GUARD



- Helps to prevent blocked drains
- Fits drains up to 300mm wide x 265mm
- Can accept shapes and types of downpipe
- 32-110mm pipe guides moulded on the inside for easy cutting.

Code Pack

DS500 15

110mm/160mm

INSPECTION CHAMBERS

Rainman inspection chambers are designed to offer an easier, more economical alternative to traditionally constructed manholes.



450mm EQUAL CHAMBERBASE



263mm invert

110mm connections

Code Pack

450mm	DS050	1
-------	-------	---

3 sockets supplied with blanking plugs.

450mm UNEQUAL CHAMBERBASE



360mm invert

110mm & 160mm connections

Code Pack

450mm	DS066	1
-------	-------	---

Side sockets supplied with blanking plugs.

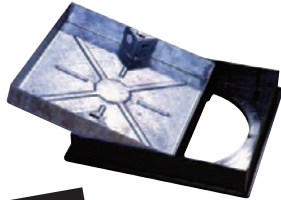
BLANKING PLUG



Code Pack

110mm	DS056	1
-------	-------	---

SQUARE/ROUND ACCESS COVER



5 tonne loading

Code Pack

580x580x95mm	DS065	1
--------------	-------	---

Suits pedestrian areas/domestic driveways (accepts pavers).

SQUARE COVER AND FRAME



3.5 tonne loading

Code Pack

580x580mm	DS076	1
-----------	-------	---

Durable polypropylene, suits pedestrian areas/domestic driveways. Lockable cover complies with Building Regs Part H.

RAISING PIECE



164mm effective height

Code Pack

450mm	DS058	1
-------	-------	---

For use with DS050 or DS066. Stacking DS058 will create a watertight seal up to 1.2m, without seals or silicone.

ROUND COVER AND FRAME



3.5 tonne loading

Code Pack

450mm	DS062	1
-------	-------	---

Durable polypropylene, suits pedestrian areas/domestic driveways. Lockable cover complies with Building Regs Part H. Overall size 550mm, clear opening 450mm

CHAMBERBASE SEAL



Code Pack

450mm	DS067	1
-------	-------	---

For DS066 base to first riser only.

110mm

SHALLOW ACCESS

230mm EQUAL CHAMBERBASE



140mm invert

110mm connections

Code Pack

230mm	DS071	1
-------	-------	---

Side sockets supplied with blanking plugs.

RAISING PIECE



205mm effective height

Code Pack

250mm (OD)	DS072	1
------------	-------	---

2 risers form 600mm overall height.

SQUARE/ROUND ACCESS COVER



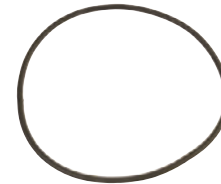
3.5 tonne loading

Code Pack

390x390x95mm	DS075	1
--------------	-------	---

Durable polypropylene suits pedestrian areas/domestic driveways (Also suitable for 300mm riser).

O RING SEAL



To form sealed access

Code Pack

250mm	DS040	1
-------	-------	---

For DS069 only.

ROUND PVC-U COVER



Sealed unit

Code Pack

275mm	DS069	1
-------	-------	---

Suits pedestrian areas only. 1 tonne loading. Overall frame 298mm, clear opening 211mm

SQUARE PVC-U COVER



Code Pack

320x320mm	DS068	1
-----------	-------	---

Suits pedestrian areas only. 1 tonne loading.

GOOD TO KNOW

ASSEMBLY HEIGHT GUIDE

Max depth 1200mm

Max depth 600mm



DS050

DS066

DS071

Base only	280mm	360mm	189mm
Base with 1 riser	444mm	524mm	394mm
Base with 2 risers	608mm	688mm	600mm
Base with 3 risers	772mm	852mm	-
Base with 4 risers	936mm	1016mm	-
Base with 5 risers	1100mm	1180mm	-

110mm/160mm

ADOPTABLE INSPECTION

An adoptable inspection chamber range compliant with Sewers for Adoption and Building Regulations.

All products in the Sewers for Adoption/OFWAT code of adoption range are suitable for both adoptable and non-adoptable applications and are easily identified on site due to their blue snap caps.

CHAMBER SYSTEMS

250mm inspection chamber Suitable for up to 2m in depth

INSPECTION CHAMBER BASE

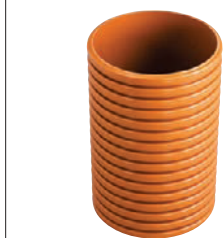
110mm connections



Code Pack

250mm UCC250 1

CHAMBER RISER



Code Pack

375mm high UAR1 1

315mm inspection chamber Suitable for up to 2m in depth

INSPECTION CHAMBER BASE

110mm connections



Code Pack

315mm UCC315 1

CHAMBER RISER

300mm



Code Pack

270mm high UAR4 1

500mm high UAR2 1

1000mm high UAR3 1

DUCTILE IRON LID AND FRAME

B125 12.5 tonnes



Code Pack

300mm UCL315 1

Overall frame 340mm, clear opening 250mm

450mm inspection chamber Suitable for up to 3m in depth

INSPECTION CHAMBER BASE

160 & 110mm connections



Code Pack

450mm UCC5 1

400mm high, 3m depth for adoptable and 4m depth for non-adoptable applications

INSPECTION CHAMBER BASE

110mm connections



Code Pack

450mm UCC450 1

400mm high, 3m depth for adoptable and 4m depth for non-adoptable applications

DEEP INSPECTION CHAMBER RISER



Code Pack

480mm high UCR3 1

Includes one seal, use SR450 seal between each connection

DUCTILE IRON LID AND FRAME

B125 12.5 tonnes



Code Pack

450mm UCL125 1

Overall frame 550mm, clear opening 450mm

REDUCED ACCESS RING

Ductile iron



Code Pack

450mm UCLRR2 1

For use with UCL125, reduces access to 350mm
Overall size 460mm, clear opening 350mm

DEEP INSPECTION CHAMBER RISER CLIP

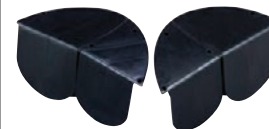
For use with UCR3



Code Pack

110mm UCC10D 10

INSPECTION CHAMBER INSERTS



Code Pack

Left Hand UCB1 1

Right Hand UCB2 1

SPARE BLANKING PLUG



Code Pack

110mm UCP1 70

160mm UCP2 75

SPARE RING SEAL



Code Pack

450mm SR450 1

For use with UCR3 riser on each connection